



EUROPEAN CENTRAL BANK

12 August 2004

PRESS RELEASE

EURO AREA MFI INTEREST RATE STATISTICS: JUNE 2004

There were mixed developments in the euro area MFI interest rates on new deposits and loans in June 2004.

Selected MFI interest rates (weighted averages on new business)
(percentages per annum excluding charges)

		Nov. 2003 – Apr. 2004 (average)	May 2004	June 2004
DEPOSITS	Overnight deposits from non-financial corporations	0.87	0.86	0.87
	Deposits from households redeemable at notice up to and including three months	2.02	2.00	2.00
	Deposits from households with agreed maturity up to and including one year	1.90	1.85	1.88
	Deposits from households with agreed maturity over two years	2.50	2.41	2.39
LOANS	Bank overdrafts of households	9.74	9.68	9.56
	Loans to non-financial corporations up to and including EUR 1 million at floating rate and up to and including one year initial rate fixation	4.00	3.98	3.96
	Loans to non-financial corporations over EUR 1 million at floating rate and up to and including one year initial rate fixation	3.00	2.95	3.02
	Loans to non-financial corporations over EUR 1 million with an initial rate fixation over five years	4.33	4.24	4.08
	Loans to households for house purchase with an initial rate fixation over five years and up to and including ten years	4.93	4.75	4.81

Source: ECB MFI interest rate statistics.

MFI interest rates on new business: The weighted average rate on overnight deposits from non-financial corporations remained broadly unchanged at 0.87% in June 2004. The weighted average rate on deposits from households redeemable at up to and including three months' notice remained unchanged at 2.00% in June. The weighted average rate on deposits from households with an agreed maturity up to and including one year increased by 3 basis points to 1.88% in June.

The weighted average rate on bank overdrafts of households decreased by 12 basis points to 9.56% in June 2004. In the case of loans up to and including EUR 1 million to non-financial corporations at floating rate or up to and including one year initial rate fixation, the weighted average rate decreased by 2 basis points to 3.96%. The weighted average rate on loans over EUR 1 million to non-financial corporations with the same initial rate fixation increased by 7 basis points to 3.02% in June. For longer-term loans, the weighted average rate on loans to non-financial corporations over EUR 1 million with over five years' initial rate fixation decreased by 16 basis points to 4.08% in June. For households, the weighted average

rate on loans for house purchase with over five and up to and including ten years' initial rate fixation increased by 6 basis points to 4.81% in June.

MFI interest rates on outstanding amounts: The weighted average interest rate paid on outstanding amounts of deposits from households with an agreed maturity up to and including two years remained unchanged at 1.89% in June 2004. The weighted average interest rate paid on outstanding amounts of deposits from non-financial corporations with an agreed maturity up to and including two years increased by 2 basis points to 2.09% in June.

The weighted average interest rate charged on outstanding amounts of loans to households for house purchases with over five years' maturity decreased by 2 basis points to 4.97% in June. Similarly, the weighted average interest rates on outstanding amounts of loans with over five years' maturity to non-financial corporations decreased by 2 basis points to 4.53% in June.

Weighting method: The interest rates on new business are weighted by the size of the individual agreements. This is done both by the reporting agents and when computing the national and euro area averages. In addition to changes in the actual interest rates, changes in the euro area average interest rates on new business therefore reflect changes in the weights of the new business per country for the instrument categories concerned.

Notes

- *New business refers to any new agreement between the customer and the MFI, while outstanding amounts refer to the stock of all deposits and all loans at a specific moment in time. Three instrument categories – overnight deposits, bank overdrafts and deposits redeemable at notice – form a separate group for which interest rates on new business and on outstanding amounts coincide.*
- *More detailed information on MFI interest rate statistics is available under "MFI interest rate statistics" in the "Statistics" section of the ECB's website (<http://www.ecb.int>).*
- *The corresponding business volumes for each of the MFI interest rate categories are shown in Tables 2 and 4 of the Annex.*

European Central Bank

Press and Information Division

Kaiserstrasse 29, D-60311 Frankfurt am Main

Tel.: +49 69 1344 7455, Fax: +49 69 1344 7404

Internet: <http://www.ecb.int>

Reproduction is permitted provided that the source is acknowledged.

Chart 1: MFI interest rates on euro-denominated deposits

(percentages per annum excluding charges; new business rates)

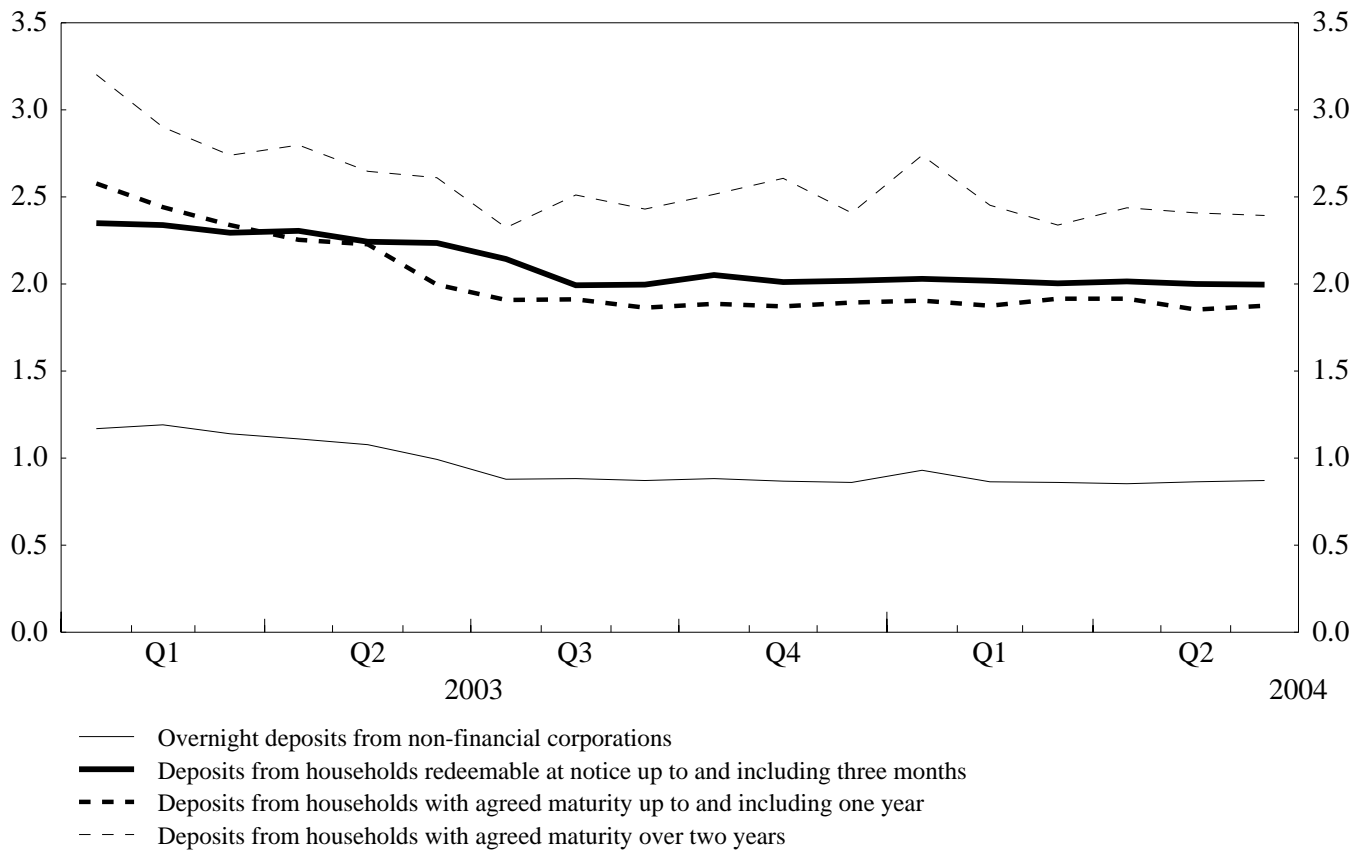


Chart 2: MFI interest rates on euro-denominated loans

(percentages per annum excluding charges; new business rates)

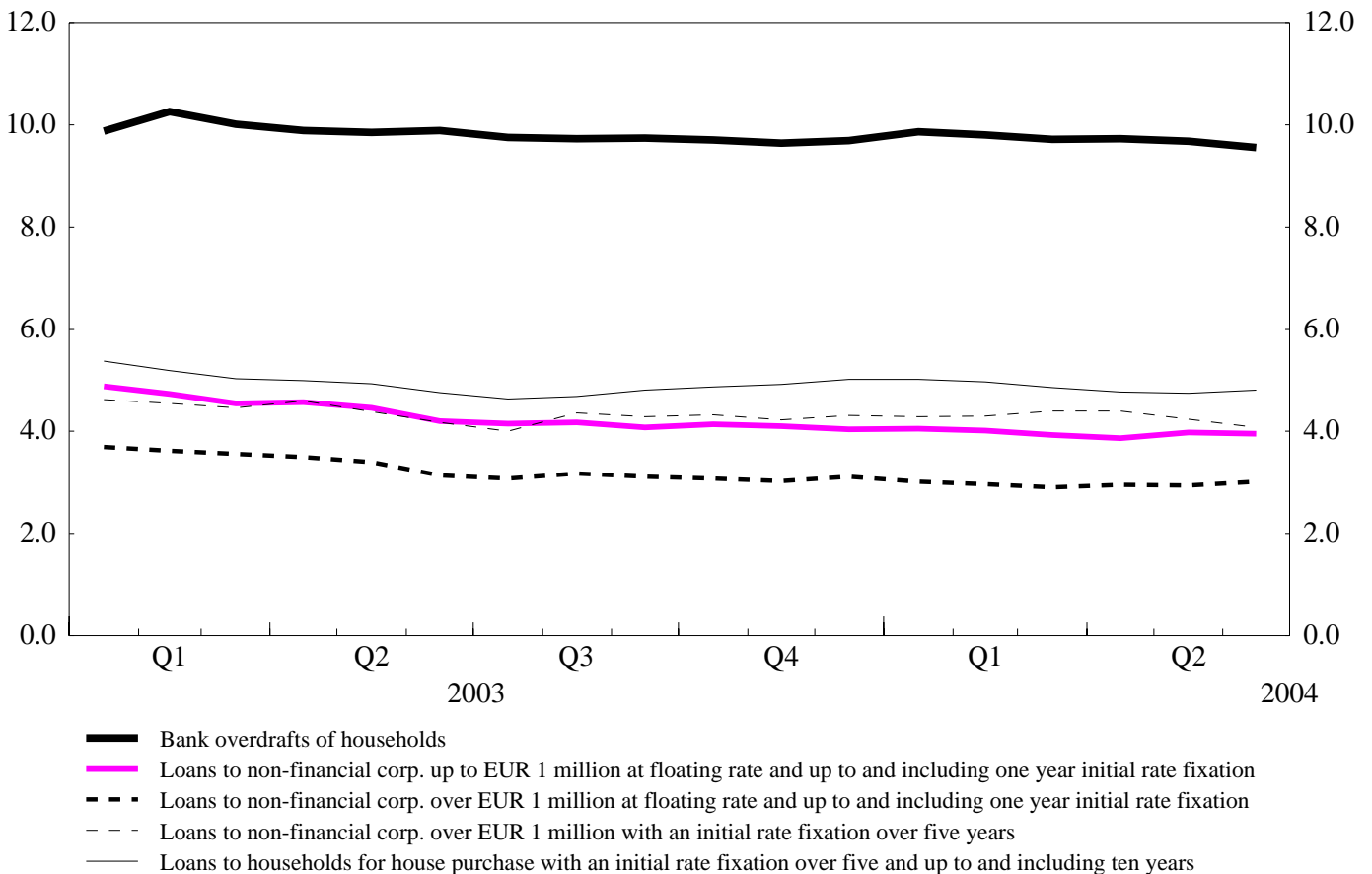


Table 1

MFI interest rates on new business of euro-denominated deposits and loans by euro area residents ¹⁾

(percentages per annum; period average rates)

	June 03	July 03	Aug. 03	Sep. 03	Oct. 03	Nov. 03	Dec. 03	Jan. 04	Feb. 04	Mar. 04	Apr. 04	May 04	June 04
Deposits													
From households													
Overnight ²⁾	0.76	0.68	0.68	0.69	0.69	0.70	0.69	0.69	0.69	0.70	0.70	0.70	0.70
With agreed maturity: <i>up to 1 year</i>	2.00	1.91	1.91	1.87	1.89	1.87	1.89	1.91	1.88	1.92	1.92	1.85	1.88
<i>over 1 and up to 2 years</i>	2.21	2.10	2.12	2.12	2.16	2.24	2.40	2.37	2.16	2.15	2.14	2.16	2.23
<i>over 2 years</i>	2.61	2.32	2.51	2.43	2.51	2.61	2.41	2.74	2.45	2.34	2.44	2.41	2.39
Redeemable at notice: ^{2),3)} <i>up to 3 months' notice</i>	2.23	2.14	1.99	2.00	2.05	2.01	2.02	2.03	2.02	2.00	2.02	2.00	2.00
<i>over 3 months' notice</i>	3.01	2.93	2.88	2.85	2.73	2.70	2.68	2.65	2.63	2.59	2.57	2.55	2.55
From non-financial corporations													
Overnight ²⁾	0.99	0.88	0.88	0.87	0.88	0.87	0.86	0.93	0.86	0.86	0.85	0.86	0.87
With agreed maturity: <i>up to 1 year</i>	2.10	2.02	2.03	2.00	1.98	1.97	2.00	1.99	1.98	1.96	1.97	1.96	1.99
<i>over 1 and up to 2 years</i>	2.18	2.14	2.27	2.29	2.23	2.36	2.42	2.07	2.21	2.11	2.00	2.06	2.27
<i>over 2 years</i>	3.05	2.80	3.56	3.63	3.89	2.70	3.35	3.12	3.59	3.35	3.50	3.75	3.79
Repos	2.14	2.03	1.98	2.00	1.99	1.97	1.99	1.95	1.98	1.98	1.95	1.95	1.98
Loans													
To households													
Bank overdraft ²⁾	9.88	9.75	9.73	9.74	9.71	9.64	9.69	9.87	9.81	9.71	9.73	9.68	9.56
For consumption: <i>floating rate and up to 1 year initial rate fixation</i>	7.11	7.24	7.70	7.44	7.20	7.57	7.66	7.62	7.43	7.34	7.31	7.30	7.18
<i>over 1 and up to 5 years' initial rate fixation</i>	6.94	7.04	6.84	6.89	6.74	6.59	6.43	7.04	6.91	6.80	6.60	6.69	6.70
<i>over 5 years' initial rate fixation</i>	8.28	8.20	8.27	8.04	8.07	7.93	7.63	8.49	8.44	8.28	8.22	8.17	8.30
For house purchase: <i>floating rate and up to 1 year initial rate fixation</i>	3.80	3.68	3.64	3.63	3.62	3.59	3.63	3.63	3.55	3.47	3.42	3.40	3.42
<i>over 1 and up to 5 years' initial rate fixation</i>	4.16	3.92	3.96	4.10	4.02	4.09	4.17	4.28	4.21	4.12	4.03	4.03	4.11
<i>over 5 and up to 10 years' initial rate fixation</i>	4.76	4.64	4.69	4.81	4.87	4.92	5.02	5.02	4.97	4.86	4.78	4.75	4.81
<i>over 10 years' initial rate fixation</i>	4.78	4.68	4.69	4.75	4.78	4.84	4.95	4.92	4.84	4.78	4.68	4.61	4.69
For other purposes: <i>floating rate and up to 1 year initial rate fixation</i>	4.12	4.10	4.13	3.98	4.05	4.15	3.85	4.06	4.10	3.94	3.87	4.11	3.93
<i>over 1 and up to 5 years' initial rate fixation</i>	4.97	4.95	5.00	5.00	5.09	5.25	5.00	5.12	5.07	5.06	4.89	4.81	4.94
<i>over 5 years' initial rate fixation</i>	4.91	4.98	4.98	5.11	5.21	5.17	5.08	5.16	5.05	4.97	4.92	4.94	5.01
To non-financial corporations													
Bank overdraft ²⁾	5.68	5.56	5.47	5.46	5.46	5.41	5.58	5.67	5.63	5.56	5.51	5.46	5.46
Other loans up to EUR 1 million: <i>floating rate and up to 1 year initial rate fixation</i>	4.20	4.16	4.17	4.08	4.14	4.10	4.04	4.06	4.02	3.94	3.87	3.98	3.96
<i>over 1 and up to 5 years' initial rate fixation</i>	4.60	4.58	4.65	4.79	4.76	4.94	4.84	4.86	4.94	4.79	4.71	4.58	4.76
<i>over 5 years' initial rate fixation</i>	4.89	4.73	4.77	4.76	4.83	4.71	4.81	4.81	4.78	4.77	4.64	4.57	4.71
Other loans over EUR 1 million: <i>floating rate and up to 1 year initial rate fixation</i>	3.14	3.08	3.18	3.11	3.08	3.02	3.12	3.01	2.97	2.91	2.96	2.95	3.02
<i>over 1 and up to 5 years' initial rate fixation</i>	3.39	3.15	3.35	3.32	3.26	3.30	3.41	3.37	3.19	3.25	3.28	3.30	3.25
<i>over 5 years' initial rate fixation</i>	4.18	4.01	4.36	4.29	4.33	4.23	4.32	4.29	4.30	4.41	4.41	4.24	4.08
Annual percentage rate of charge ⁴⁾ (APRC) on loans to households for consumption	8.02	7.92	8.04	8.02	7.91	7.84	7.71	8.32	8.16	8.01	7.82	7.92	7.98
Annual percentage rate of charge ⁴⁾ (APRC) on loans to households for house purchases	4.42	4.33	4.41	4.41	4.40	4.42	4.45	4.48	4.34	4.28	4.27	4.20	4.20

Source: ECB MFI interest rate statistics.

1) In the above table 'up to' shall mean 'up to and including'.

2) For this instrument category, new business and outstanding amounts coincide. End-of-period rates.

3) For this instrument category, households and non-financial corporations are merged and allocated to the household sector, since the outstanding amounts of non-financial corporations are negligible compared with those of the household sector in all participating Member States combined.

4) The annual percentage rate of charge covers the total cost of the loans. These total costs comprise an interest rate component and a component of other (related) charges, such as the cost of inquiries, administration, preparation of documents, guarantees, etc.

Table 2

Volumes of new business of euro-denominated deposits and loans by euro area residents ¹⁾

(EUR billions)

	June 03	July 03	Aug. 03	Sep. 03	Oct. 03	Nov. 03	Dec. 03	Jan. 04	Feb. 04	Mar. 04	Apr. 04	May 04	June 04
Deposits													
From households													
Overnight ^{2),3)}	1,227.0	1,260.4	1,260.4	1,261.3	1,264.4	1,287.2	1,301.6	1,305.0	1,306.8	1,309.4	1,323.7	1,338.2	1,356.1
With agreed maturity: <i>up to 1 year</i>	106.8	115.2	96.3	109.3	107.8	101.6	107.9	111.0	91.6	109.0	108.6	98.5	95.2
<i>over 1 and up to 2 years</i>	2.2	2.6	2.5	2.6	3.0	2.8	3.6	4.3	3.1	2.3	2.8	2.6	2.4
<i>over 2 years</i>	6.7	5.8	4.7	5.4	8.2	7.6	7.7	10.5	8.7	8.4	7.3	7.6	6.5
Redeemable at notice: ^{2),3),4)} <i>up to 3 months' notice</i>	1,356.1	1,367.0	1,373.3	1,373.4	1,376.5	1,381.8	1,414.4	1,429.1	1,433.5	1,438.2	1,444.1	1,449.5	1,460.3
<i>over 3 months' notice</i>	94.2	92.1	90.6	89.9	90.0	90.2	91.2	90.2	89.9	89.7	88.5	87.7	86.7
From non-financial corporations													
Overnight ^{2),3)}	568.3	560.1	556.4	576.8	573.7	586.7	604.1	576.3	568.8	585.5	586.6	594.3	615.9
With agreed maturity: <i>up to 1 year</i>	176.4	195.1	175.0	176.5	184.0	165.0	184.5	170.7	163.5	195.0	169.2	160.1	159.9
<i>over 1 and up to 2 years</i>	0.6	1.5	0.4	0.5	0.4	0.7	0.9	0.8	0.5	0.5	0.5	0.4	0.5
<i>over 2 years</i>	2.8	1.9	5.3	1.5	4.9	3.0	2.1	1.9	1.3	1.9	1.6	2.4	1.8
Repos	150.7	160.2	111.2	152.0	163.5	143.9	149.9	135.1	128.1	136.7	119.9	120.6	128.7
Loans													
To households													
Bank overdraft ²⁾	178.0	174.8	173.6	175.5	173.3	169.7	174.3	172.2	168.8	170.3	168.9	166.7	176.6
For consumption: <i>floating rate and up to 1 year initial rate fixation</i>	6.8	6.4	4.9	5.8	6.9	5.8	6.1	5.7	5.6	6.6	7.0	6.3	6.7
<i>over 1 and up to 5 years' initial rate fixation</i>	10.5	12.9	9.2	11.8	10.8	11.6	10.3	8.9	10.8	13.3	13.8	12.0	12.5
<i>over 5 years' initial rate fixation</i>	5.6	6.6	5.1	6.4	6.4	5.9	5.4	5.4	5.7	7.1	6.6	5.6	6.8
For house purchase: <i>floating rate and up to 1 year initial rate fixation</i>	21.8	24.8	14.3	18.5	21.8	20.3	24.8	19.7	21.8	28.3	27.7	27.9	31.5
<i>over 1 and up to 5 years' initial rate fixation</i>	8.3	10.3	7.6	8.5	9.4	8.4	9.6	7.2	6.5	8.2	8.0	7.6	8.3
<i>over 5 and up to 10 years' initial rate fixation</i>	8.4	11.1	9.4	10.6	10.9	9.5	12.3	9.1	7.3	9.3	8.6	7.9	9.2
<i>over 10 years' initial rate fixation</i>	8.8	11.3	8.6	9.3	9.0	7.8	8.1	8.3	6.2	9.3	9.9	8.8	8.4
For other purposes: <i>floating rate and up to 1 year initial rate fixation</i>	19.8	19.9	14.2	19.0	22.3	16.8	24.0	18.3	15.4	21.0	20.6	16.5	21.1
<i>over 1 and up to 5 years' initial rate fixation</i>	3.1	3.5	2.4	2.9	5.0	2.9	4.2	3.2	3.1	3.7	3.2	3.0	4.3
<i>over 5 years' initial rate fixation</i>	4.0	3.8	3.0	3.8	3.4	2.9	4.9	2.8	2.8	4.6	3.9	2.8	4.3
To non-financial corporations													
Bank overdraft ²⁾	484.5	474.6	467.5	469.9	463.9	471.3	475.2	466.7	463.0	463.3	461.7	459.7	468.6
Other loans up to EUR 1 million: <i>floating rate and up to 1 year initial rate fixation</i>	58.6	65.2	42.2	58.5	60.9	54.7	64.6	59.4	58.5	69.6	68.8	60.1	67.2
<i>over 1 and up to 5 years' initial rate fixation</i>	6.3	7.8	5.6	5.3	5.7	4.9	6.2	4.4	5.0	5.7	5.7	5.5	5.8
<i>over 5 years' initial rate fixation</i>	4.0	4.6	3.8	4.1	4.1	3.3	4.3	3.8	3.0	4.2	4.3	4.0	4.2
Other loans over EUR 1 million: <i>floating rate and up to 1 year initial rate fixation</i>	149.0	134.1	101.9	118.8	126.0	121.2	153.4	127.3	104.1	135.9	119.5	116.5	168.4
<i>over 1 and up to 5 years' initial rate fixation</i>	15.0	14.3	9.3	10.8	13.1	12.1	14.9	13.6	9.8	11.8	13.4	10.6	13.8
<i>over 5 years' initial rate fixation</i>	11.6	12.0	8.1	11.6	11.4	10.0	16.5	9.9	6.8	10.2	9.6	11.6	13.0
Annual percentage rate of charge ⁵⁾ (APRC) on loans to households for consumption	22.8	25.9	19.1	24.0	24.0	23.1	21.8	20.0	22.1	27.0	27.3	23.9	26.0
Annual percentage rate of charge ⁵⁾ (APRC) on loans to households for house purchases	47.3	57.4	39.9	46.9	50.9	45.9	54.7	44.2	41.7	55.1	54.1	52.1	57.4

Source: ECB MFI interest rate statistics.

1) In the above table 'up to' shall mean 'up to and including'.

2) For this instrument category, new business and outstanding amounts coincide.

3) The business volumes are derived from non-seasonally adjusted MFI balance sheet statistics.

4) For this instrument category, households and non-financial corporations are merged and allocated to the household sector, since the outstanding amounts of non-financial corporations are negligible compared with those of the household sector in all participating Member States combined.

5) The annual percentage rate of charge covers the total cost of the loans. These total costs comprise an interest rate component and a component of other (related) charges, such as the cost of inquiries, administration, preparation of documents, guarantees, etc.

Table 3**MFI interest rates on outstanding amounts of euro-denominated deposits and loans by euro area residents ¹⁾***(percentages per annum excluding charges; end-of-period)*

	June 03	July 03	Aug. 03	Sep. 03	Oct. 03	Nov. 03	Dec. 03	Jan. 04	Feb. 04	Mar. 04	Apr. 04	May 04	June 04
Deposits													
From households													
With agreed maturity: <i>up to 2 years</i>	2.18	2.08	2.04	2.01	1.97	1.98	1.97	1.94	1.93	1.92	1.90	1.89	1.89
<i>over 2 years</i>	3.48	3.43	3.43	3.44	3.47	3.44	3.54	3.36	3.42	3.32	3.35	3.28	3.27
From non-financial corporations													
With agreed maturity: <i>up to 2 years</i>	2.26	2.24	2.20	2.23	2.12	2.13	2.14	2.09	2.09	2.08	2.09	2.07	2.09
<i>over 2 years</i>	4.45	4.40	4.26	4.32	4.33	4.43	4.25	4.27	4.22	4.17	4.16	4.15	4.11
Repos	2.19	2.08	2.05	2.04	2.03	1.98	1.98	1.95	1.97	1.93	1.92	1.93	1.94
Loans													
To households													
For house purchases: <i>up to 1 year maturity</i>	5.27	5.18	5.07	5.00	5.00	4.97	5.09	5.05	5.01	4.98	4.90	4.89	4.87
<i>over 1 and up to 5 years maturity</i>	5.13	5.07	4.99	4.95	4.92	4.90	4.88	4.89	4.91	4.82	4.75	4.72	4.69
<i>over 5 years maturity</i>	5.40	5.31	5.25	5.24	5.20	5.17	5.14	5.11	5.11	5.03	5.01	4.99	4.97
Consumer credit and other loans: <i>up to 1 year maturity</i>	8.39	8.33	8.28	8.30	8.13	7.98	8.04	8.15	8.13	8.05	8.03	7.99	7.93
<i>over 1 and up to 5 years maturity</i>	7.37	7.28	7.23	7.27	7.13	7.09	7.05	7.02	7.16	7.17	7.08	7.04	6.99
<i>over 5 years maturity</i>	6.03	5.96	6.07	6.00	5.84	5.82	6.00	5.92	5.95	5.89	5.85	5.82	5.80
To non-financial corporations: <i>up to 1 year maturity</i>	4.72	4.61	4.54	4.55	4.56	4.52	4.56	4.58	4.62	4.56	4.51	4.50	4.48
<i>over 1 and up to 5 years maturity</i>	4.47	4.32	4.21	4.20	4.12	4.18	4.23	4.07	4.06	3.96	3.91	3.87	3.90
<i>over 5 years maturity</i>	4.90	4.81	4.74	4.75	4.71	4.67	4.67	4.56	4.58	4.61	4.59	4.55	4.53

Source: ECB MFI interest rate statistics.

1) In the above table 'up to' shall mean 'up to and including'.

Table 4**Volumes of outstanding amounts of euro-denominated deposits and loans by euro area residents ^{1),2)}***(EUR billions)*

	June 03	July 03	Aug. 03	Sep. 03	Oct. 03	Nov. 03	Dec. 03	Jan. 04	Feb. 04	Mar. 04	Apr. 04	May 04	June 04
Deposits													
From households													
With agreed maturity: <i>up to 2 years</i>	536.4	534.5	531.8	528.3	525.0	521.4	518.9	513.1	505.8	501.4	497.6	493.8	491.9
<i>over 2 years</i>	584.3	584.9	585.2	585.4	586.4	586.2	599.8	603.7	605.9	607.6	609.1	609.9	611.6
From non-financial corporations													
With agreed maturity: <i>up to 2 years</i>	247.1	251.0	257.1	251.6	257.5	257.9	251.8	238.8	250.1	248.0	242.8	246.3	236.2
<i>over 2 years</i>	54.1	55.0	57.5	58.8	58.0	60.1	60.7	61.3	62.1	63.0	64.3	64.5	63.5
Repos	91.5	90.9	90.0	85.5	86.1	84.7	82.7	79.3	80.0	77.4	78.5	76.3	75.7
Loans³⁾													
To households													
For house purchases: <i>up to 1 year maturity</i>	15.5	15.3	15.4	15.7	15.5	15.5	13.9	13.6	13.5	13.8	13.7	13.8	14.4
<i>over 1 and up to 5 years maturity</i>	67.9	68.7	69.0	69.4	70.3	70.2	62.7	61.7	61.6	61.0	61.3	61.7	62.8
<i>over 5 years maturity</i>	2,153.9	2,175.5	2,188.9	2,197.5	2,215.1	2,229.0	2,255.3	2,268.4	2,281.1	2,295.6	2,312.9	2,331.7	2,353.0
Consumer credit and other loans: <i>up to 1 year maturity</i>	251.1	245.1	240.9	245.4	243.4	242.3	247.0	243.0	240.2	241.2	241.8	239.9	251.6
<i>over 1 and up to 5 years maturity</i>	268.1	269.7	268.4	271.6	272.2	273.5	273.5	271.0	272.0	274.3	276.8	276.7	279.1
<i>over 5 years maturity</i>	604.1	609.9	611.9	612.0	613.2	614.4	615.6	615.3	618.5	624.0	627.5	630.1	637.9
To non-financial corporations: <i>up to 1 year maturity</i>	937.6	924.6	914.7	910.0	900.4	906.4	904.3	906.3	899.0	894.6	898.9	894.8	909.8
<i>over 1 and up to 5 years maturity</i>	481.7	487.9	493.4	494.3	498.4	501.7	503.3	504.9	505.8	503.6	507.9	512.7	511.3
<i>over 5 years maturity</i>	1,431.0	1,436.8	1,443.9	1,448.1	1,457.2	1,466.8	1,480.3	1,481.2	1,488.2	1,503.8	1,515.5	1,525.1	1,525.9

Source: ECB MFI interest rate statistics.

1) In the above table 'up to' shall mean 'up to and including'.

2) The business volumes for all outstanding amounts indicators are derived from non-seasonally adjusted MFI balance sheet statistics.

3) Based on ECB estimations for some countries.