

# Capturing GDP nowcast uncertainty in real time<sup>1</sup>

11th ECB Conference on Forecasting Techniques  
Macroeconomic forecasting in abnormal times

Paul Labonne

King's College London & ESCoE

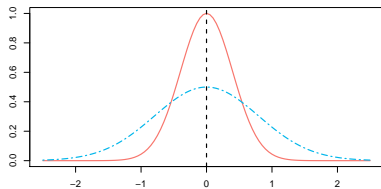
---

<sup>1</sup>A taste of

# Motivation

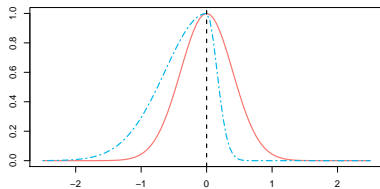
- Nowcasting methods make use of series related to economic growth but released earlier and more frequently.
- These series carry a signal on forecasting uncertainty which is not exploited fully.
- This uncertainty :
  - Has non-Gaussian features, typically fat tails and skewness;
  - Varies along the business cycle.

Figure: Dispersion



— Dispersion parameter = 1    - - - Dispersion parameter = 2

Figure: Asymmetry

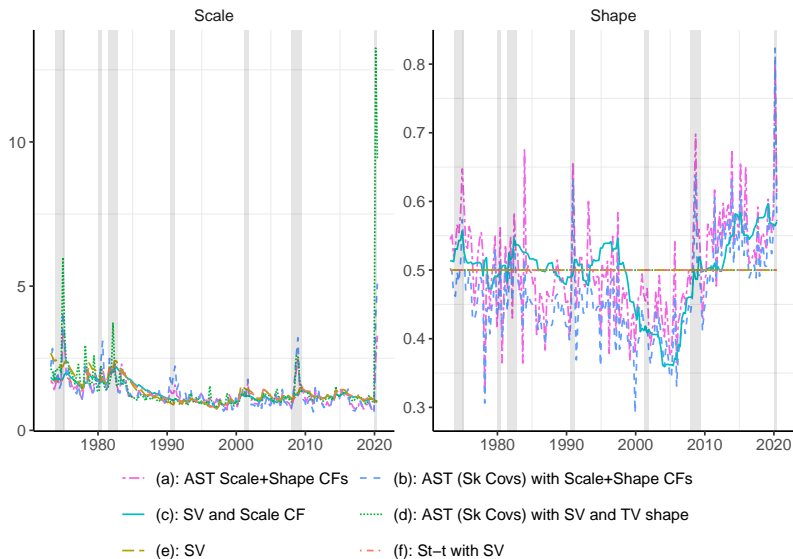


— Symmetric    - - - Skewed to the left

## Novelty of the approach

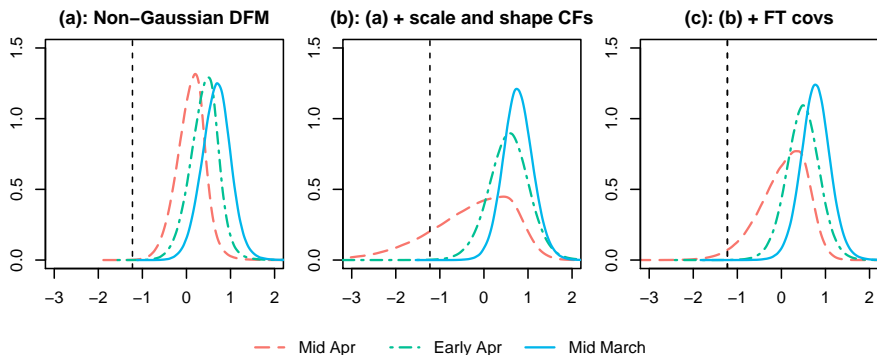
- I model common factors in **scale** and **shape** parameters, controlling the **dispersion** and **asymmetry** of possible outcomes round point forecasts.
- I discuss the temporal disaggregation of scale and shape parameters.
  - An approximation for modelling a common volatility component in mixed-frequency Gaussian models is proposed.
- To model non-Gaussian features I use **score driven** methods.
- Estimation with weighted maximum likelihood.

# First key (full-sample) result : Scale and shape common factors carry economic meaning



## Second key (real-time) result : Scale and shape common factors improve nowcasting

Figure: Onset of the pandemic : Density nowcasts of Q1 2020 US GDP



- A) Scale and shape common factors yield gains in density forecasts towards the end of the nowcasting window.
- B) Modelling fat tails in related series hinders the model's ability to capture turning points.

## Take-aways

- Modelling scale and shape common factors improves estimation of nowcasting uncertainty during bad times.
- The gain from modelling a shape common factor outweighs the loss in precision stemming from the aggregation of the related series.
- The approximation for modelling a common volatility component with mixed-frequency data can be applied to many models. Worth trying in MIDAS models.